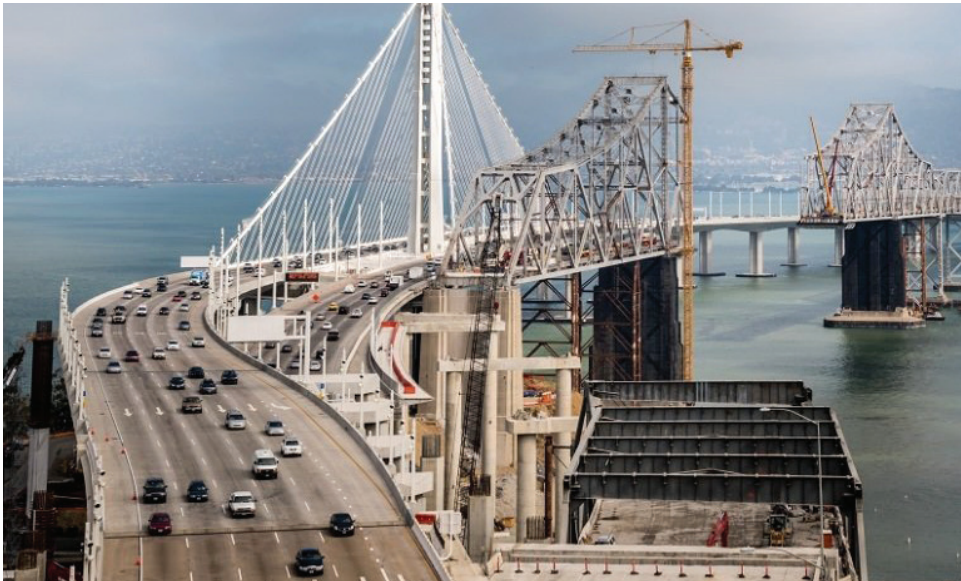


A First Among States, California Plugs the 'Carbon Loophole'

The new Buy Clean California Act is the world's first legislative effort to address supply chain carbon emissions.



The San Francisco-Oakland Bay Bridge's eastern span was replaced with a new crossing that opened in 2013. (BayBridgInfo)

By Elizabeth Daigneau

In early 2006, the California Department of Transportation put out a bid for work on the San Francisco-Oakland Bay Bridge. Several steel mills from around the West Coast threw their hats in. But ultimately, it was a mill 6,500 miles away in China that won. California's steel mills were furious.

The decision was controversial for a lot of reasons. But for California steel mills, the issue was simple: They have to comply with some of the strictest pollution rules in the world. Because of that, they've invested in clean technology that produces half the emissions (or less) per ton of steel than the dirtiest mills. But, they argued, there was no market advantage to them for making their product cleaner; the playing field wasn't level. The Sierra Club of California and the BlueGreen Alliance, which is a national organization that connects labor with environmental issues, agreed. There was indeed no requirement that the state Department of Transportation select the cleaner steel. Why not then, the groups wondered, make one?

Enter the Buy Clean California Act, the world's first legislative effort to address supply chain carbon emissions. The act, which Gov. Jerry Brown signed into law in October, requires state agencies to consider the carbon footprint of ma-

terials used in infrastructure projects when purchasing steel, flat glass and mineral wool, which is a broad category of insulation for buildings.

The idea of targeting supply chain emissions isn't new. Greenpeace, for instance, has the Click Green campaign that tries to encourage large technology companies to buy 100 percent renewable energy. But the Buy Clean California Act is the first legislative iteration of such efforts.

It targets something climate policymakers call "the carbon loophole." More than 20 percent of the world's greenhouse gas emissions are caused by the manufacture of products in one state, but consumed in another. But states can only directly regulate the emissions that come from within their borders; they can't make other states adhere to their standards. "What happens is you pass a regulation in California and the industries that don't want to comply move away. They can therefore continue polluting at the same rate," says Matthew Lewis, a communications consultant

for the ClimateWorks Foundation, one of the organizations behind the law. "That's the carbon loophole, and the problem we're addressing with the Buy Clean California Act."

The law is backed by labor unions, industrial factories and environmentalists because it has something for everyone: The state spends about \$10 billion a year on infrastructure, and under

the law, a large chunk of that money will now be directed at low-carbon suppliers.

Buy Clean formally takes effect in 2019, but state agencies will begin working on it next year. They are tasked with identifying benchmarks, adopting them and adding them to the procurement process. While the law only targets steel, glass and mineral wool, "we're hoping to expand that to include more categories in the next year," says Lewis. "There's an appetite both among the legislature and governor's office -- and really by California voters who overwhelming support climate policy at the state level -- to eventually cover all products purchased by the state of California."

Already, California has received inquiries about replicating the law in other states and at least one European country. "What we hope will happen is that any factory that makes any covered product will look at the California market and say, 'That's a big enough market for us to also invest in cleaner processes and cleaner technologies,'" says Lewis. "This is also something state and local governments can do on their own."

SOURCE: <http://www.governing.com>

SBE OUTREACH SERVICES

With 1.5 million businesses in our database, SBE is California's #1 source for diversity outreach.

Advertisements

Placed in the Small Business Exchange newspaper, SBE Today newsletter, and online at www.sbeinc.com

Faxed and Eblast Solicitations

Targeted mailings sent to businesses per your criteria.

Telemarketing

Telephone follow-up calls that follow a script of 5 questions you create.

Computer Generated Reports

Will fit right into your proposal, along with a list of interested firms to contact.

Contact Info:

795 Folsom Street, 1st Flr, Room 1124
San Francisco, CA 94107
Email: sbe@sbeinc.com
Website: www.sbeinc.com
Phone: (415) 778-6250, (800) 800-8534
Fax: (415) 778-6255

Publisher of
Small Business Exchange
weekly newspaper



California Sub-Bid Request Ads



BROSAMER & WALL, INC.

An Equal Opportunity Employer
is requesting quotations from all qualified DBE
Professional services, sub-contractors, material suppliers and trucking for the following project:

Contract No. 04-3G6034

Pavement Rehabilitation and Ramp Metering

STATE HIGHWAY 680 IN ALAMEDA COUNTY, IN FREMONT, FROM 0.15 MILE SOUTH OF SCOTT CREEK ROAD UNDERCROSSING

TO AUTOMALL PARKWAY OVERCROSSING.

Bid Closing Date: December 20, 2017 @ 2:00 PM

DBE GOAL: 12%

We Encourage All DBEs To Attend The Mandatory Prebid Meeting Scheduled On November 15, 2017 At 10:00 A.M.
In Order To Meet The B&W Team At The Caltrans Pleasanton Construction Office, 5675 B Gibraltar Dr., Pleasanton, Ca 94588.

CONTACT:

Brosamer & Wall Inc.
1777 Oakland Blvd, Suite 300 • Walnut Creek, California 94596
PH: 925-932-7900 • FAX: 925-279-2269

PROJECT SCOPE:

We are requesting bids for the following trades and/or material suppliers:

Brosamer & Wall Inc., is requesting quotes from all qualified subcontractors and suppliers including Certified DBE firms for all items of work, including but not limited to:

Lead Compliance Plan, Progress Schedule, Construction Area Signs, Traffic Control System, Temporary Traffic Devices, Temporary Traffic Stripe (Paint), Temporary Railing (Type K), Prepare SWPPP, Storm Water Sampling And Analysis Day, Storm Water Annual Reports, Street Sweeping, Temporary Erosion Control Measures (Check Dams, Fiber Roll, Protect Inlets, Etc.), Remove Yellow Thermoplastic Traffic Stripe (Hazardous Waste), Treated Wood Waste, Temporary High Visibility Fence, Clearing And Grubbing, Structure Excavation, Structure Backfill, Pervious Backfill Material (Retaining Wall), Aggregate Base, Aggregate Subbase, Lean Concrete Base, Lean Concrete Base Rapid Set, Crack & Seal Existing PCC Pavement, Crack Treatment, Replace Asphalt Concrete Surfacing, Hot Mix Asphalt, Rubberized Hot Mix Asphalt, Geosynthetic Pavement Interlayer, Place Hot Mix Asphalt Dike, Tack Coat, Remove Asphalt Concrete Pavement, Remove Asphalt Concrete Dike, Cold Plane Asphalt Concrete Pavement, Precast Jointed Concrete Pavement, Individual Slab Replacement (RSC), Furnish Piling, Drive Pile (Class 90), 60" Cast In Drilled Hole Concrete Pile (Sign Foundation), Structural Concrete Retaining Wall, Structural Concrete, Minor Concrete, Fractured Rib Texture, Joint Seal, Bar Reinforcing Steel, Furnish Sign Structure (Truss), Remove Sign Structure, Underground Storm Drain Systems – Reinforced Concrete Pipe, Remove Concrete Channel, Culvert Slurry Cement Backfill, Sand Backfill, Concrete (Gutter Lining), Rock Slope Protection, Rock Slope Protection Fabric, Minor Concrete, Minor Concrete (Brushed Concrete), Frame & Grate, Remove Pavement Marker, Pavement Marker (Retroreflective), Barrier Marker, Object Marker, Remove Roadside Sign, Panel, Relocate Roadside Sign, Furnish Aluminum Sign Panels, Retroreflective Sheeting, Metal (Barrier Mounted Sign), Roadside Sign (One And Two Post), Midwest Guardrail System (Wood Post), Vegetation Control (Minor Concrete), Transition Railing, End Anchor Assembly, Alternative In Line Terminal System, Concrete Barrier, Remove Guardrail, Thermoplastic Pavement Marking (Enhanced Wet Night Visibility), Two Component Paint Traffic Stripe, Thermoplastic Traffic Stripe, Rumble Strip, Maintaining Existing Traffic Management System Elements During Construction, Modifying Existing Electrical System, General Trucking and Bulk Asphalt Oil Supply.

Requirements: Brosamer & Wall, Inc. will work with interested subcontractors/suppliers to identify opportunities to break down items into economically feasible packages to facilitate DBE Participation. Brosamer & Wall, Inc. is a union signatory contractor. Subcontractors must possess a current contractor's license, insurance coverage and worker's compensation for the entire length of the contract.

All subcontractors will be required to sign our standard Subcontract Agreement. 100% payment and performance bonds may be required. If you have any questions regarding this project or need assistance in obtaining/waiving insurance, bonding, equipment, materials and/or supplies please call or email Robert Rosas contact information below.

Plans and specifications can be viewed at our office located at 1777 Oakland Blvd Suite 300, Walnut Creek, Ca. 94596 or at no cost from Caltrans website. B&W will also make plans electronically please email rrosas@brosamerwall.com for free online link. Brosamer & Wall INC., intends to work cooperatively with all qualified firms seeking work on this project. If you are interested in submitting a subcontractor bid for this project, you may contact Robert Rosas Chief Estimator at 925-932-7900 or fax us your quote at 925-279-2269. PLEASE SUBMIT A COPY OF YOUR CURRENT DBE CERTIFICATION WITH YOUR BID. Subcontractors, Dealers/Suppliers and Brokers please provide your designation code to us on or before the bid date. B&W, INC., IS AN EQUAL OPPORTUNITY EMPLOYER.

RGW Construction, Inc.

Contractors License A/B 591940

550 Greenville Road • Livermore, CA 94550 • Phone: 925-606-2400 • Fax: 925-961-1925
An Equal Opportunity Employer

RGW Construction Inc. is seeking all qualified Minority/Woman Owned Business Enterprises (M/WBE's) for the following project:

Restoration of Bockman Canal (Line N) From 200 Feet Downstream of Tide Gate Structure to UPRR in Unincorporated San Lorenzo, Alameda County, California Zone No.2 Project
FC 2-D-135

Alameda County Flood District & Water Conservation District

MBE Goal: 15% WBE Goal: 5%

Engineer Estimate: \$1,150,000.00- 180 Calendar Days

Bids: Tuesday, December 12, 2017 @ 2:00pm

Requesting Sub-quotes for (including but not limited to): Clear & Grub, Landscaping, Hydroseeding, Erosion Control, Aggregate Base, Rock Slope Protection, Fencing, Surveyor, SWPPP/WPC/BMP's, Sweeper & Trucker, Video Taping, Dewatering.

Scope of Work: Preparing & implementing WPCP, designing, installing, maintaining and removing, sheetpile, cofferdam and dewatering system: excavating, removing, hauling and transporting excavated materials. Placing & Compacting Class 2 aggregate base. Furnishing and installing rock riprap slope protection, chain link fence and gate, tide gate bridge railing, clearing and grubbing, furnishing & installing erosion control fabric & hydroseeding.

RGW is willing to breakout any portion of work to encourage M/WBE participation. Contact us for a specific item list. Plans and Specs are available to view and copy at our office or online from Website: <http://www.ipdservices.com/clients/eastbay/ALCO>. Contact John Pitsch 925-606-2400 ext.2438 jpitsch@rgwconstruction.com for any questions, including bonding, lines of credit, insurance, scheduling, equipment or material suppliers. Subcontractors should be prepared to submit payment and performance bonds equal to 100% of their quotation.



Graniterock

5225 Hellyer Avenue, Suite #220

San Jose, CA 95138

Phone (408) 574-1400 Fax (408) 365-9548

Contact: David Kennedy

Email: estimating@graniterock.com

REQUESTING SUB-QUOTES FROM
QUALIFIED SBE / MBE / WBE / Labor
Surplus Area Firms SUBCONTRACTORS/
SUPPLIERS/TRUCKERS FOR:

**Rubber Dam No. 3 Fishway Construction
and Fabric Replacement**

ACWD Project No. G-G43.03B, Job 21083

Owner: Alameda County Water District

Engineers' Estimate: \$9,780,000.

BID DATE: December 20, 2017 @ 3:00 PM

Items of work include but are not limited to:
SWPPP, Signs, Site Security, Erosion Control,
Hazardous Material Control, Dewatering, Anode
Well, Cast-In-Place Reinforced Concrete, Misc.
Metal Work, Chain-Link Fence & Gate, Shoring,
Fiber Optic Work, Electrical and Trucking.

Granite Rock Company 'Graniterock' is signatory to Operating Engineers, Laborers, Teamsters, Carpenters and Cement Masons unions. 100% performance and payment bonds will be required from a qualified surety company for the full amount of the subcontract price. Bonding assistance is available. Graniterock will pay bond premium up to 1.5%. In addition to bonding assistance, subcontractors are encouraged to contact Graniterock Estimating with questions regarding obtaining lines of credit, insurance, equipment, materials and/or supplies, or with any questions you may have. Subcontractors must possess a current contractor's license, DIR number, insurance and worker's compensation coverage. Subcontractors will be required to enter into our standard contract. Graniterock intends to work cooperatively with all qualified firms seeking work on this project.

We are an Equal Opportunity Employer

With SBE you can:

FIND
Subcontractors, Vendors,
and Suppliers

REACH
Diverse Audiences

ADVERTISE
Sub-Bid Request Ad
Public Legal Notices
Job Listings

Contact us at
800-800-8534 or
sbe@sbeinc.com



California Sub-Bid Request Ads

DESILVA GATES CONSTRUCTION

11555 Dublin Boulevard • P.O. Box 2909
 Dublin, CA 94568-2909
 (925) 829-9220 / FAX (925) 803-4263
 Estimator: VICTOR LE
 Website: www.desilvagates.com
 An Equal Opportunity Employer

DeSilva Gates Construction (DGC) is preparing a bid as a Prime Contractor for the project listed below:

CALTRANS ROUTE 880 – CONSTRUCTION ON STATE HIGHWAY IN ALAMEDA COUNTY IN FREMONT, UNION CITY, HAYWARD, SAN LEANDRO AND OAKLAND FROM 0.4 MILE NORTH OF FREMONT BOULEVARD OVERCROSSING TO HIGH STREET UNDERCROSSING
 Contract No. 04-4H5804,
 Federal Aid Project No. ACIM-8801(081)E,
 Disadvantaged Business Enterprise Goal Assigned is 14%

OWNER:
**STATE OF CALIFORNIA
 DEPARTMENT OF TRANSPORTATION**
 1727 30th Street, Bidder's Exchange, MS 26,
 Sacramento, CA 95816

BID DATE: DECEMBER 13th, 2017 @ 2:00 P.M.

DGC is soliciting quotations from certified Disadvantaged Business Enterprises, for the following types of work and supplies/materials including but not limited to:

AC Dike, Clearing and Grubbing/Demolition, Cold Plane, Concrete Barrier, Construction Area Sign, Crash Cushion, Electrical, Erosion Control, Fencing, Hazardous Material, High Friction Surface Treatment, Landscaping / Irrigation, Lead Compliance Plan, Metal Beam Guardrail, Minor Concrete, Minor Concrete Structure, PCC Paving, Roadside Signs, Delineator, Markers, Rumble Strip, Striping, Survey/Staking, SWPPP Prep/ Water Pollution Control Plan Prepare, Temporary Erosion Control, Underground, Vegetation Control, Trucking, Water Trucks, Weed Control Mat, Street Sweeping, Class 2 Aggregate Base Material, Class 3 Aggregate Base Material, Hot Mix Asphalt (Type A) Material, Rubberized HMA (Open Grade) Material, Rubberized HMA (Gap Grade) Material.

Plans and specifications may be reviewed at our offices located at 11555 Dublin Boulevard, Dublin, CA or 7700 College Town Drive, Sacramento, CA, or at your local Builders Exchange, or reviewed and downloaded from the ftp site at <ftp://ftp%25desilvagates.com:f7pa55wd@pub.desilvagates.com> (if prompted the username is [ftp%25desilvagates.com](ftp://ftp%25desilvagates.com:f7pa55wd@pub.desilvagates.com) and password is [f7pa55wd](ftp://ftp%25desilvagates.com:f7pa55wd@pub.desilvagates.com)) or from the Owner's site at www.dot.ca.gov/hq/esc/oe/weekly_ads/all_adv_projects.php

Fax your bid to (925) 803-4263 to the attention of Estimator Victor Le. If you have questions for the Estimator, call at (925) 829-9220. When submitting any public works bid please include your DUNS number and DIR number. For questions regarding registration for DIR use the link at www.dir.ca.gov/Public-Works/PublicWorks.html

If you need DBE support services and assistance in obtaining bonding, lines of credit, insurance, necessary equipment, materials and/or supplies or related assistance or services, for this project call the Estimator at (925) 829-9220, or contact your local Small Business Development Center Network (<http://californiasbdc.org>) or contact the California Southwest Transportation Resource Center (www.transportation.gov/osdbu/SBTRCs). DGC is willing to breakout portions of work to increase the expectation of meeting the DBE goal.

At our discretion, 100% Payment and 100% Performance bonds may be required as a subcontract condition. This will be a PREVAILING WAGE JOB. DGC is an equal opportunity employer.

DESILVA GATES CONSTRUCTION

11555 Dublin Boulevard • P.O. Box 2909
 Dublin, CA 94568-2909
 (925) 829-9220 / FAX (925) 803-4263
 Estimator: ALAN MCKEAN
 Website: www.desilvagates.com
 An Equal Opportunity Employer

DeSilva Gates Construction (DGC) is preparing a bid as a Prime Contractor for the project listed below:

MISSION BOULEVARD CORRIDOR IMPROVEMENTS PHASE 2, Project No. 05270
 OWNER:
 CITY OF HAYWARD
 777 B Street, 4th Floor, Hayward, CA 94541
BID DATE: DECEMBER 5, 2017 @ 2:00 P.M.

DGC is soliciting quotations from certified Disadvantaged Business Enterprises, for the following types of work and supplies/materials including but not limited to:

ADJUST IRON, CLEARING AND GRUBBING/DEMOLITION, COLD PLANE, ELECTRICAL, FENCING, JOINT TRENCH, IRRIGATION, LANDSCAPING, MINOR CONCRETE, PAVING STONE, STRIPING, SWPPP/WATER POLLUTION CONTROL PLAN PREPARATION, TREE REMOVAL/TRIMMING, UNDERGROUND, TRUCKING, WATER TRUCKS, STREET SWEEPING, CLASS 2 AGGREGATE BASE MATERIAL, HOT MIX ASPHALT (TYPE A) MATERIAL.

Plans and specifications may be reviewed at our offices located at 11555 Dublin Boulevard, Dublin, CA or 7700 College Town Drive, Sacramento, CA, or at your local Builders Exchange, or reviewed and downloaded from the ftp site at <ftp://ftp%25desilvagates.com:f7pa55wd@pub.desilvagates.com> (if prompted the username is [ftp%25desilvagates.com](ftp://ftp%25desilvagates.com:f7pa55wd@pub.desilvagates.com) and password is [f7pa55wd](ftp://ftp%25desilvagates.com:f7pa55wd@pub.desilvagates.com)) or from the Owner.

Fax your bid to (925) 803-4263 to the attention of Estimator Alan McKean. If you have questions for the Estimator, call at (925) 829-9220. When submitting any public works bid please include your DUNS number and DIR number. For questions regarding registration for DIR use the link at www.dir.ca.gov/Public-Works/PublicWorks.html

If you need DBE support services and assistance in obtaining bonding, lines of credit, insurance, necessary equipment, materials and/or supplies or related assistance or services, for this project call the Estimator at (925) 829-9220, or contact your local Small Business Development Center Network (<http://californiasbdc.org>) or contact the California Southwest Transportation Resource Center (www.transportation.gov/osdbu/SBTRCs). DGC is willing to breakout portions of work to increase the expectation of meeting the DBE goal.

At our discretion, 100% Payment and 100% Performance bonds may be required as a subcontract condition. This will be a PREVAILING WAGE JOB. DGC is an equal opportunity employer.



O.C. Jones & Sons, Inc.
 1520 Fourth Street • Berkeley, CA 94710
 Phone: 510-526-3424 • FAX: 510-526-0990
 Contact: Jean Sicard
 An Equal Opportunity Employer

REQUEST FOR DBE SUBCONTRACTORS AND SUPPLIERS FOR:

Roadway Surfacing, Precast Joint Concrete Pavement and Electricals

Hwy 880 Alameda County Caltrans #04-4H5804

BID DATE: December 13, 2017 @ 2:00 PM

We are soliciting quotes for (including but not limited to): Trucking, Lead Compliance Plan, Construction Area Signs, Traffic Control System, Portable Changeable Message Sign, SWPPP, Rain Event Action Plan, Storm Water Sampling & Analysis, Temporary Fencing, Sweeping, Treated Wood Waste, Noise Monitoring, Clearing & Grubbing, Roadway Excavation (Type Z-2 Aerially Deposited Lead), Ditch Excavation (Type Z-2 Aerially Deposited Lead), Imported Borrow, Relocate Valves & Assemblies, Weed Control Mat, Irrigation, Hydroseed, Compost, Lean Concrete Base Rapid Setting, Base Bond Breaker, High Friction Surface Treatment, Preparing Inertial Profiler, Preparing Grinding, Prime Coat, AC Dike, Tack Coat, Cold Plane AC, Precast Jointed Concrete Pavement, Isolation Seal Joint, Structural Concrete, Approach Slabs, Minor Concrete, Paving Notch Extension, Clean Expansion Joint, Joint Seal, Pedestrian Barricade, Rock Slope Protection, Detectable Warning Surface, Pre/Post Construction Surveys, Misc. Iron & Steel, Inlet Grate, Fencing, Pavement Marker, Object Marker, Roadside Signs, Midwest Guardrail System, Transition Railing, Concrete Barrier, Striping & Marking, Rumble Strip, Electrical and Construction Materials

100% Performance & Payment Bonds may be required. Worker's Compensation Waiver of Subrogation required. Please call OCJ for assistance with bonding, insurance, necessary equipment, material and/or supplies. OCJ is willing to breakout any portion of work to encourage SBE Participation. Plans & Specs are available for viewing at our office.

Looking for Subcontractors, Vendors, and Suppliers?

Advertise your Sub-Bid Requests in the Small Business Exchange. With a monthly readership of 75,000, SBE reaches a diverse audience, cutting across ethnic and gender lines as well as traditional industry segments.



Call 1-800-800-8534 or visit us at www.sbeinc.com



California Sub-Bid Request Ads



O.C. Jones & Sons, Inc.
 1520 Fourth Street • Berkeley, CA 94710
 Phone: 510-526-3424 • FAX: 510-526-0990
 Contact: Greg Souder
 An Equal Opportunity Employer

REQUEST FOR DBE
 SUBCONTRACTORS AND SUPPLIERS FOR:

**Pavement rehabilitation and ramp metering
 Hwy 680 Fremont
 Caltrans #04-3G6034**

BID DATE: December 20, 2017 @ 2:00 PM

We are soliciting quotes for (including but not limited to): Trucking, Progress Schedule, Lead Compliance Plan, Construction Area Signs, Traffic Control System, Portable Changeable Message Sign, SWPPP, Rain Event Action Plan, Storm Water Sampling & Analysis, Sweeping, Treated Wood Waste, Clearing & Grubbing, Temporary Erosion Control Measures, Roadway Excavation, Structure Excavation, Structure Backfill, Pervious Backfill Material, Imported Borrow, Cement Treated Base, Rapid Set LCP, Lean Concrete Base, Crack and Seal, Crack Treatment, Geosynthetic Pavement Interlayer, AC Dike, Tack Coat, Cold Plane AC, Precast Jointed Concrete Pavement, Individual Slab Replacement, Furnish & Drive Pile, Concrete Gutter Lining, CIDH Pile, Structural Concrete, Minor Concrete, Paving Notch Extension, Fractured Rib Texture, Clean Expansion Joint, Joint Seal, Bar Reinforcing Steel, Sign Structure, Underground, Adjust Utilities, Culvert Slurry-Cement Backfill, Rock Slope Protection, Misc. Iron & Steel, Pavement Marker, Barrier Marker, Object Marker, Roadside Signs, Midwest Guardrail System, Vegetation Control (Minor Concrete), Temp K-Rail and Crash Cushion, Concrete Barrier Type 60s & 736s, Striping & Marking, Rumble Strip, Electrical, and Construction Materials

100% Performance & Payment Bonds may be required. Worker's Compensation Waiver of Subrogation required. Please call OCJ for assistance with bonding, insurance, necessary equipment, material and/or supplies. OCJ is willing to breakout any portion of work to encourage DBE Participation. Plans & Specs are available for viewing at our office or through the Caltrans Website at www.dot.ca.gov/hq/esc/oe/weekly_ads/index.php.



O.C. Jones & Sons, Inc.
 1520 Fourth Street • Berkeley, CA 94710
 Phone: 510-526-3424 • FAX: 510-526-0990
 Contact: Donat Galicz
 An Equal Opportunity Employer

REQUEST FOR DBE/MBE/WBE
 SUBCONTRACTORS AND SUPPLIERS FOR:

**Low Impact Development Improvements at
 951 Turner Court Parking Lots – Hayward
 Alameda County Flood Control and
 Water Conservation District**

BID DATE: December 19, 2017 @ 2:00 PM

We are soliciting quotes for (including but not limited to): Trucking, Water Pollution Control, Sweeping, Clearing & Grubbing, Relocate Fire Hydrant, Underground, Storm Drain, Trash Capture Inlet, Bioretention Area Drain Inlet, Trash Collector Connector Pipe Screen, Tree Well, Silva Cell System, Eco-Flex Rubber Flooring Tiles, Wetland-Mod System (with Curb Inlet), Rainwater Harvesting System, Furnish & Install Pavers, Geotextile, Geomembrane Liner, Geogrid, Stone Subbase, Class 2 Permeable Material, Decomposed Granite Path, Bioretention Soil, Minor Concrete, Sandstone Benches, Painted Striping & Marking, Electrical, Planting & Irrigation, Signs, Double Leaf Steel Pipe Drive Gate, CIDH Piles, Construction Staking, and Construction Materials.

100% Performance & Payment Bonds may be required. Worker's Compensation Waiver of Subrogation required. Please call OCJ for assistance with bonding, insurance, necessary equipment, material and/or supplies. OCJ is willing to breakout any portion of work to encourage MBE/WBE Participation. Plans & Specs are available for viewing at our office.

SMALL
BUSINESS
 EXCHANGE

Shimmick/Con-Quest JV

8201 Edgewater Drive, Suite 202 • Oakland, CA 94621
 Phone (510) 777-5000 • Fax (510) 777-5099

SBE & DBE Subcontractor/Supplier Bids Requested For:
**City and County of San Francisco Municipal Transportation Agency
 Twin Peaks Tunnel Trackway Improvement Project
 Contract No. 1282R1**

Bid Date: December 21, 2017 at 3:00PM

Fax all quotes to 510-777-5099 or email to northwest.esteeming@shimmick.com

Requesting certified SBE & DBE Subcontractor and Supplier Quotes on: Concrete, Demolition, Electrical, Flatwork, Grinding, Instrumentation, Mechanical, Paving, Railroad, Rebar, Survey, Trackwork, Traffic Control, Trucking, Utility Work, Waterproof, Aggregate Supplier, Expansion Joints Supplier, Lumber Supplier, Mechanical Equipment Supplier, Railroad Products, Ready Mix Supplier, Utility Pipe Supplier, Pipe Bursting, Pipe Slip-Lining, Concrete Crack & Spall Repair, Fire Protection – Sprinklers, Alarm System, Halon System, Security Systems, Train Controls & Signals

Bid documents may be obtained from the SFMTA on the 3rd Floor, One South Van Ness Ave., San Francisco, California 94103, by emailing a request to Mr. Allan Andaya at allan.andaya@sfmta.com, or faxing a request to (415) 701-4300.

Bid documents are also available for viewing by appointment only at Shimmick Construction's Office: 8201 Edgewater Drive, Suite 202, Oakland, CA 94621.

Subcontractors and Suppliers interested in this project may contact Bill Johnson by email at bjohnson@shimmick.com.

100% Performance and Payment bonds with a surety company subject to approval of Shimmick/Con-Quest JV are required of subcontractors for this project. Shimmick/Con-Quest JV will pay bond premium up to 1.5%. Subcontractors will be required to abide by terms and conditions of the AGC Master Labor Agreements and to execute an agreement utilizing the latest SCCI Long Form Standard Subcontract incorporating prime contract terms and conditions, including payment provisions. Shimmick/Con-Quest JV's listing of a Subcontractor is not to be construed as an acceptance of all of the Subcontractor's conditions or exceptions included with the Subcontractor's price quote. Shimmick/Con-Quest JV requires that Subcontractors and Suppliers price quotes be provided at a reasonable time prior to the bid deadline to enable a complete evaluation. For assistance with bonding, insurance or lines of credit contact Scott Fairgrieve at (510) 777-5000.

**DBE SUBCONTRACTORS/SUPPLIER
 BIDS/PROPOSALS REQUESTED
 PURPLE LINE EXTENSION PROJECT,
 SECTION 3 – DESIGN/BUILD**

**RFQ/RFP CONTRACT NO. C40403C1151,
 LOS ANGELES, CA**

**BID/PROPOSAL SUBMITTAL DATE TO
 LACMTA: January 29, 2018 @ 2:00 PM**

**OWNER: LOS ANGELES COUNTY METROPOLITAN
 TRANSPORTATION AUTHORITY (LACMTA)
 PERFORMANCE/PAYMENT/SUPPLY BOND
 MAY BE REQUIRED**

**THIS ADVERTISEMENT IS IN RESPONSE TO
 LACMTA'S DBE PROGRAM.
 FRONTIER-KEMPER/TUTOR PERINI, JOINT
 VENTURE (FKTPJV) AND LEAD DESIGN FIRM,
 STV INCORPORATED, INTENDS TO CONDUCT
 ITSELF IN "GOOD FAITH" WITH DBE FIRMS
 REGARDING PARTICIPATION ON THIS PROJECT.**

**DRAWINGS AND SPECS CAN BE REVIEWED IN
 OUR OFFICE MONDAY THROUGH FRIDAY,
 8:00 AM TO 5:00 PM. QUOTES ARE REQUIRED
 BY CLOSE OF BUSINESS JANUARY 15th, 2018,
 SO THAT ALL BIDS/PROPOSALS CAN BE FAIRLY
 EVALUATED. PLEASE SUBMIT BIDS/PROPOSALS
 FOR THE FOLLOWING WORK
 (BUT NOT LIMITED TO):**

Administrative Services, Aggregate Suppliers, Asphalt Paving and Aggregate Base, Asphalt/Concrete Crushing, Building & Surface Demolition, Camera Sewer Inspection, Cleaning/Janitorial Services, Compensation, Grouting/Ground Treatment, Concrete Barrier, Concrete Coring, Concrete Flatwork, Concrete Formwork and Supply Concrete Placing, Concrete Pumping, Construction Area Signs, Contaminated Soil Handling, Dewatering, Electrical, Commodities, Electrical Contractors, Electrical Equipment, Erosion Control, Fabricated Steel Tunnel Liners, Fencing – Chain link, Fencing – Wood, Fuel/Oil and Grease, Hazardous Material Removal, Instrumentation/Settlement Monitoring, Landscaping, Lead and Asbestos Abatement, Manhole Covers/Grating, Metal Fabrication, Minor Concrete/Structures, Noise/Vibration Monitoring, Pavement Marking, Photography, Public Relations, QA/QC, Testing, Ready Mix Concrete Supply, Rebar/GFRP Furnish & Install, Roadway/Parking Lot Striping, Secant Pile Headwalls & Shaft, Security Services, Precast Concrete Tunnel Liners – Furnish, Shotcrete Materials, Signage, Survey, SWPPP Plan Preparation, SWPPP Implementation, Temporary Construction Materials, Temporary Utilities, Portable Toilets/Service, Traffic Control, Traffic Signals, Trailers/Field Offices, Trucking/Hauling, Underground Utilities – Furnish Materials, Utilities–Relocation of Existing (Sewer, Water, Storm Drain), Utility Location/Mapping Water Treatment, Waterproofing, Water top, Webcam Services, WF Soldier Piles/Round Pipe Struts – Furnish, Wheel Wash.

**ALL DBE FIRMS MUST BE CERTIFIED UNDER
 THE CALIFORNIA UNIFIED CERTIFICATION
 PROGRAM (CUCP) BY THE BID/PROPOSAL DUE
 DATE AND MUST PROVIDE OUR OFFICE WITH A
 COPY OF THEIR DBE CERTIFICATION LETTER TO
 INCLUDE WITH OUR BID/PROPOSAL.**

**CONTACT: Frontier Kemper
 Purple Line 3 Estimating Team
 FRONTIER-KEMPER/TUTOR PERINI,
 JOINT VENTURE
 15900 OLDEN STREET, SYLMAR, CA 91342
 PHONE 818/362-2062 FAX 818/833-4289
 AN EQUAL OPPORTUNITY EMPLOYER**